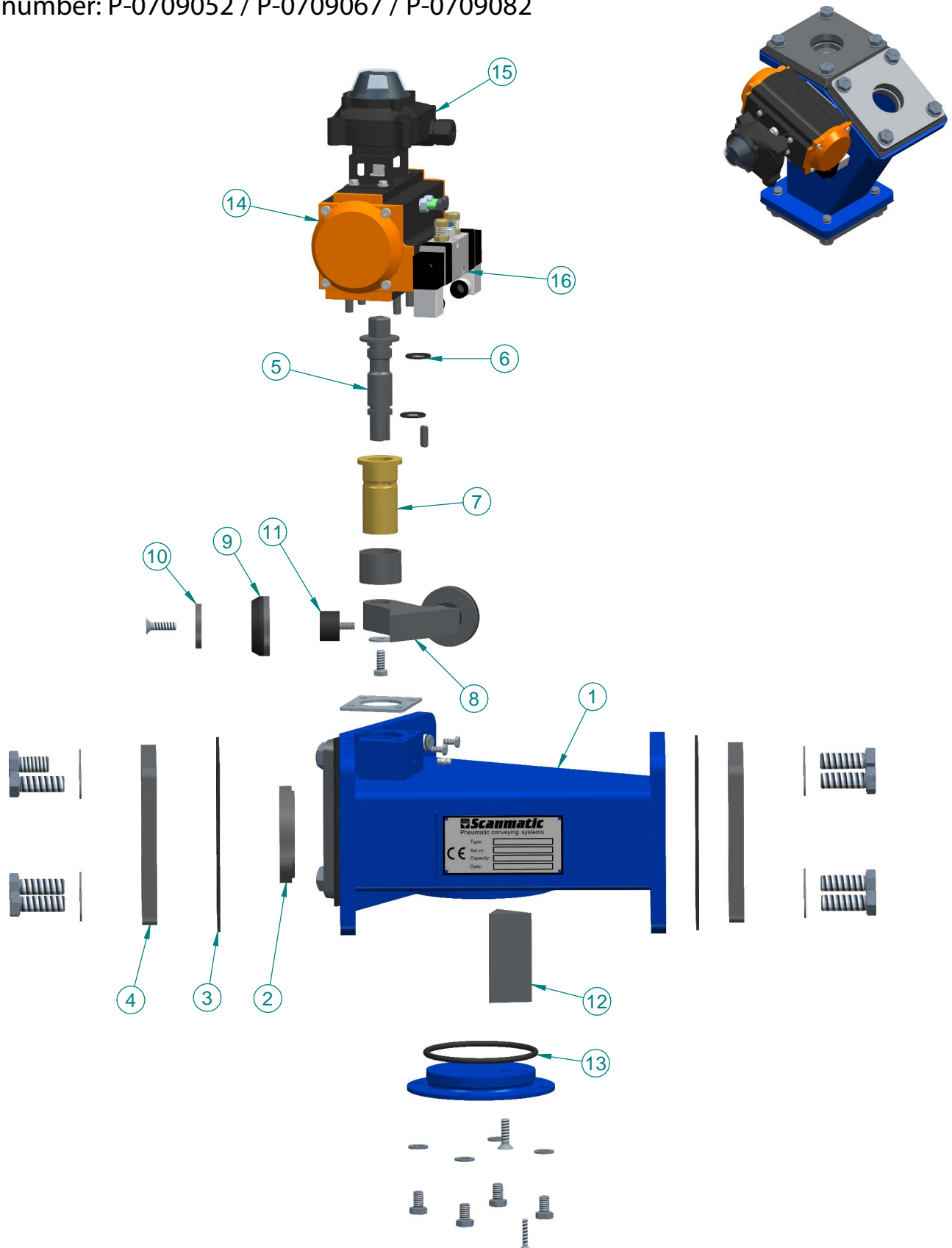


Diverter valve SVV3 50-80

Article number: P-0709052 / P-0709067 / P-0709082



Diverter valve SVV3 50-80

Article number: P-0709052 / P-0709067 / P-0709082

Reccomeded spare- and wear parts					
No.	Title	Spare part	Wear part	Product group	Art.no
16	Solenoid valve 5-2 bi-stable 24 VDC complete	Yes		TS09-002	P-10302500
15	Limit switch box A250PSM mechanical IP67	Yes		TS09-003	P-232501
14	Actuator PA83	Yes		TS07-005	P-210083
13	O-ring 99,2x5,7	Yes		TS07-009	P-300004
12	Cone protection	Yes		TS07-009	P-401395
11	Vibration damper 30x20-M8	Yes		TS07-009	P-1003020
10	Washer Ø45	Yes		TS07-009	P-40034301
9	Cone DN80	Yes	Yes	TS07-009	P-400358-00
9	Cone DN65	Yes	Yes	TS07-009	P-40035501
9	Cone DN50	Yes	Yes	TS07-009	P-40034201
8	Arm	Yes		TS07-009	P-30010800
7	Bushing	Yes		TS07-009	P-40033801
6	O-ring 19,3x3	Yes		TS07-009	P-300001
5	Axle	Yes		TS07-009	P-40034001
4	Flange DN80	Yes		TS07-009	P-40036001
4	Flange DN65	Yes		TS07-009	P-40035801
4	Flange DN50	Yes		TS07-009	P-40034901
3	Gasket DN80	Yes		TS07-009	P-40023401
3	Gasket DN65	Yes		TS07-009	P-40023301
3	Gasket DN50	Yes		TS07-009	P-40034801
2	Seat DN80	Yes	Yes	TS07-009	P-40035901
2	Seat DN65	Yes	Yes	TS07-009	P-40035601
2	Seat DN50	Yes	Yes	TS07-009	P-40034401
1	Valve hosue SVV3 50-80	Yes		TS07-009	P-30011401

Solenoid valve, alternatives					
No.	Title	Spare part	Wear part	Product group	Art.no
16	Solenoid valve 5-2 mono stable 24 VDC	Yes		TS09-002	P-103023
16	Solenoid valve 5-2 mono stable 230 VAC	Yes		TS09-002	P-1030231
16	Solenoid valve 5-2 bi-stable 230 VAC complete	Yes		TS09-002	P-10302501

Limit switch, alternatives					
No.	Title	Spare part	Wear part	Product group	Art.no
15	IFM Inductive sensor IN5225	Yes		TS09-014	P-232515
15	Limit switch box A252PSP inductive IP67	Yes		TS09-003	P-232502

WHEN ORDERING SPARE PARTS, ALWAYS SPECIFY:

- The product´s type designation (SVV3-150), and manufacturing number (T-XX XXX).
- The article number, quantity and name of the spare part.